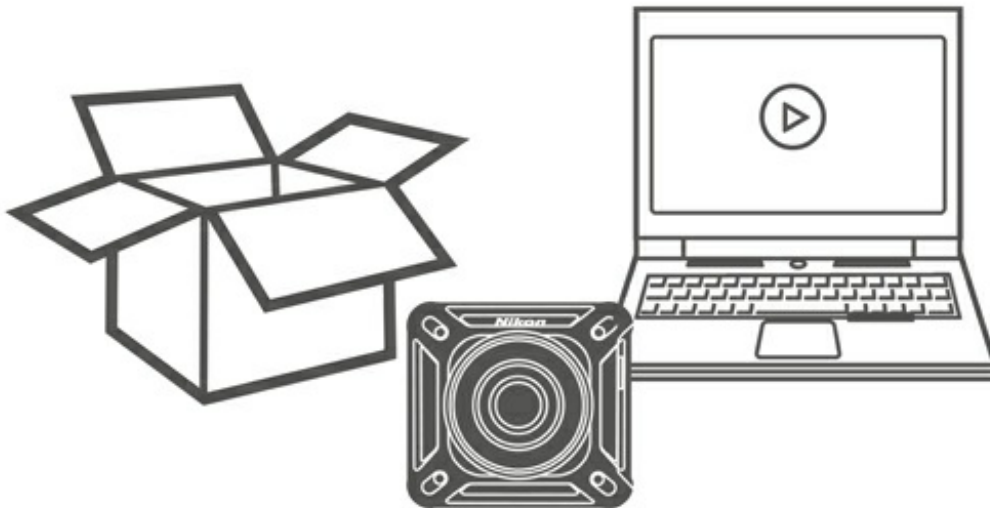


AUGUST 19, 2019

Nikon | LEARN &
EXPLORE

BEGINNER

Nikon KeyMission 360 Information & Education



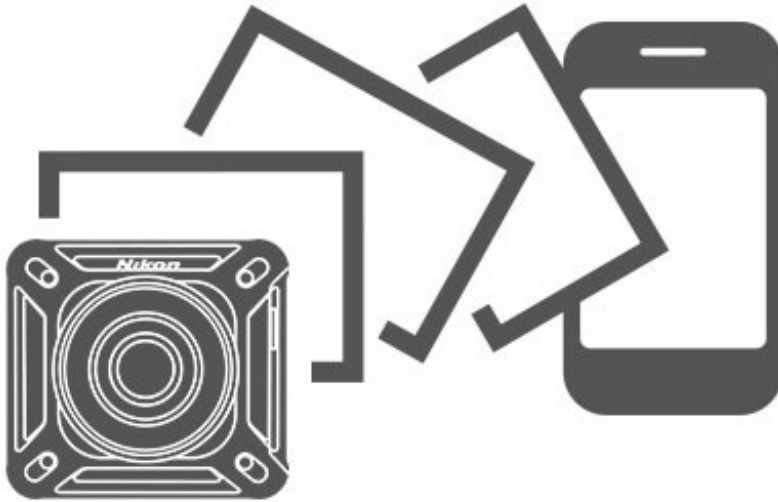
Watch the Videos & Learn How to Set-Up Your KeyMission 360
Nikon Ambassador Corey Rich unboxes a KeyMission 360 and offers a step-by-step set-up of the camera and a compatible iPhone®/iPad® and Android™-powered smart devices using Bluetooth and Wi-Fi®. The various menu items in the SnapBridge 360/170 app are discussed as well. Then watch Corey shooting with the camera, downloading the content to a smart device via the app, as well as to a computer for editing with the KeyMission 360/170 Utility software. Lastly see how to convert video files for uploading to YouTube™ or Facebook for a true 360° immersive experience.

[View the videos >](#)

[View the Quick Start Guide for IOS >](#)

[View the Quick Start Guide for Android >](#)

Pairing a compatible phone to your **KeyMission 360**



Connecting to SnapBridge 360/170

The KeyMission 360 camera utilizes the SnapBridge 360/170 app for smartphones and tablets to download and view images, take photos and videos, as well as change camera settings. Follow the step-by-step instructions to connect your iPhone® / iPad® or Android™-powered smart device running the SnapBridge 360/170 app to the camera via Bluetooth® and Wi-Fi®.

[Read the instructions for iPhone® & iPad® users >](#)

[Read the instructions for Android™-powered device users >](#)



Bluetooth Connectivity Troubleshooting

If you're having difficulty pairing the KeyMission 360 to the SnapBridge 360/170

app, you'll want to troubleshoot the issue. To do this, you will need to un-pair and re-pair the KeyMission 360 and smart device. We've put together detailed instructions as to how to un-pair and re-pair your KeyMission 360 camera and iPhone® or iPad®.

[Read the instructions for iPhone® & iPad® users >](#)

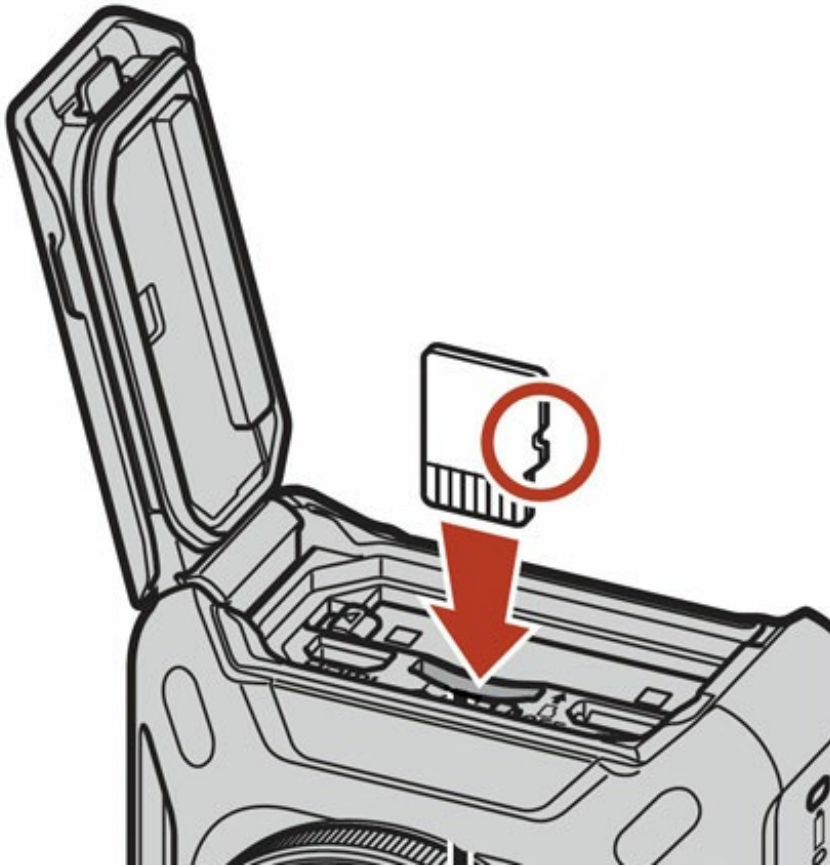


Wi-Fi® Connectivity Troubleshooting

The KeyMission 360 action camera connects to your smart device using both Bluetooth® and Wi-Fi®. Follow these step by step instructions when connecting you smart device to the KeyMission 360 via Wi-Fi®.

[Read the instructions for iPhone® & iPad® users >](#)

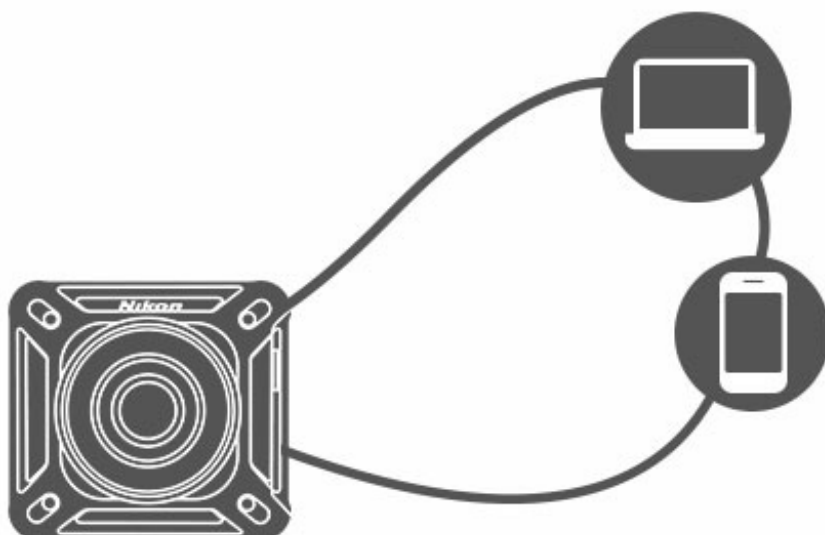
Additional helpful information for your **KeyMission 360**



Recommended Media Cards

Which media card should I use with the KeyMission 360? It is important to choose the right media card, for the ideal experience when using a KeyMission 360 action camera to shoot still photos or video. Learn which are the recommended speed rated media cards.

[Learn more >](#)



Workflow Options

You've got a few options for how you set up your workflow with regards to getting your 360° videos and photos from the KeyMission 360 to a compatible smartphone or tablet, personal computer and ultimately the web for viewing and sharing. Learn how to convert files for uploading to YouTube™ and Facebook.

[Learn more >](#)

KeyMission 360 FAQ

We've put together a helpful FAQ or list of frequently asked questions that should help you navigate your way around the KeyMission 360 action camera and its smart device app, SnapBridge 360/170.

[Learn more >](#)

KeyMission 360 Updates

Here you'll find information on updates to KeyMission 360 firmware and SnapBridge 360/170 app updates, as well as other important information from Nikon.

[Learn more >](#)

KeyMission 360 Firmware Updates

Here you'll find updates for the KeyMission 360 firmware.

[Learn more >](#)

SnapBridge 360/170 App.

Click the links to go to the App Store or Google Play respectively, for the SnapBridge 360/170 App. Choose your smart device's operating system below.

[SnapBridge 360/170 for iOS >](#)

[SnapBridge 360/170 for Android™ >](#)