



Nikon Capture

IMAGE PROCESSING SOFTWARE TO UNLEASH THE FULL POWER OF NEF



Nikon Software



Nikon Capture™

PRODUCT NUMBER: 25291

POWERFUL IMAGE PROCESSING/EDITING AND ENHANCED WORKFLOW

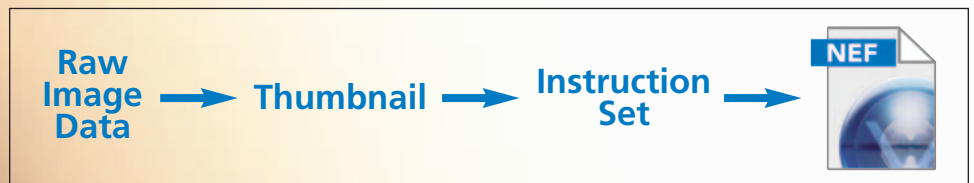
Newly enhanced to fully exploit the power of the exciting new Nikon D2x, D2Hs, D70s and D50 digital SLR models as well as previously available Nikon digital SLR models. Nikon Capture enables you to process and edit Nikon Electronic File (NEF) format files as no other software can, while also providing robust JPEG and TIFF capability. Capture extends your image-making capabilities from Camera to NEF to Computer as you work toward the perfect image. Capture's most recent upgrade provides impressive speed enhancements that help you shorten your workflow time through a number of impressive tools and technology changes. Nikon digital camera owners will want to add Capture to their software toolbox and enable full use of the performance of NEF files. Capture software must be purchased separately and is available at authorized Nikon dealers and www.nikonmall.com.

NEF and Capture: A Perfect Match

Developed to leverage the full power of NEF, Capture allows you to exercise exceptional image processing control from image-capture to archive. In fact, Capture provides the best way to get the most out of your Nikon digital SLR produced NEF files. Because Nikon developed NEF as a key component of the Nikon System, we know exactly how to process the files for optimized image quality.

The Power of NEF

The out-of-the-camera NEF file is composed of de-bayered raw image data, a thumbnail, and



an Instruction Set. Combined, these elements provide the foundation for extensive image-processing capability through Nikon's Capture Software. Raw image data, which includes brightness and color range, is the information collected by the image sensor's pixels. With fully processed file types like TIFF and JPEG, subsequent editing with software will have certain limitations and more complex workflow issues. NEF files are partially processed in-camera (de-bayering process) and otherwise unprocessed and unfinished. The balance of required processing is done using Nikon's Capture Software in-computer; this combination of NEF and Capture offers unprecedented image processing capability and final image quality that is both versatile and high in quality. It's versatile because you can subsequently re-process the image for a different result, without adversely affecting the original image! It's high in quality through the combination of the NEF file's special structure, and the



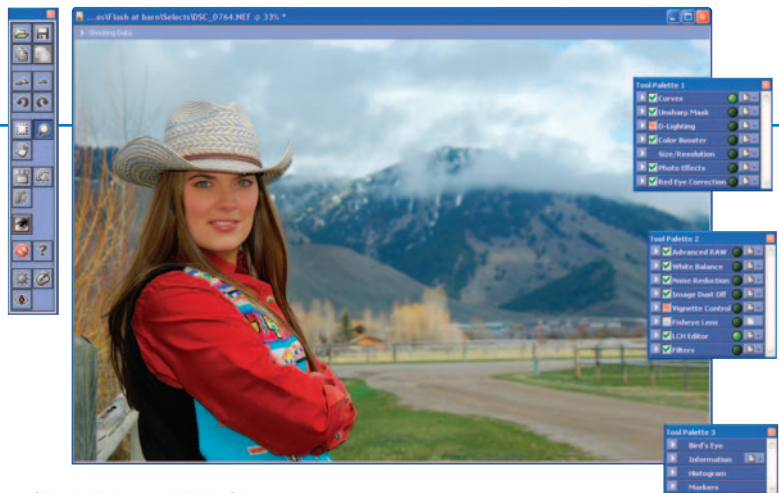
in-computer power and special tools in Capture software.

The Instruction Set: the image control settings you selected on the camera prior to shooting are stored in the NEF's Instruction Set. The de-bayered raw sensor data from the camera is stored in 12-bit color depth, for enhanced color quality. Using Capture to process the NEF file's raw sensor data according to the embedded Instruction Set, you create an image that displays the effects of the camera's original settings and have unprecedented versatility for further image changes.

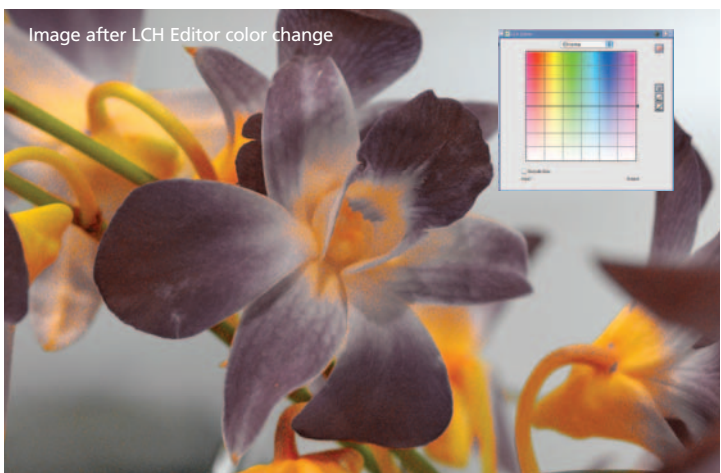
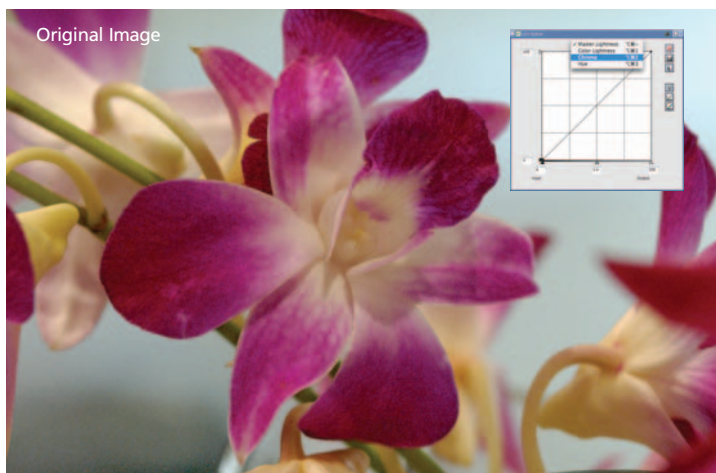
Capture enables you to change the original Instruction Set to correspond to alternative camera settings in a sense allowing you to "remake" the photo on your computer and instantly view the effects, importantly, the changes you make in computer can be more subtle and over a wider range than the settings that are made in camera. You can even create new Instruction Sets and apply them to other images. Because NEF operates with raw data, you can process images in ways that are impossible with ordinary file formats.

The NEF file's original de-bayered raw image data and accompanying Instruction Set are always preserved. Any adjustments made in Capture can be made active or inactive by clicking the mouse, enabling you to see the changes and quickly make image processing decisions. When you've completed and saved your changes, the file will have the equivalent of two Instruction Sets, the original plus embedded new instructions that reflect your newly saved changes.

If you wish, you can reopen the file, view the most recent version, and change the settings once again. The file discards the first set of changes and stores your newly saved changes. At any time, you can revert to the original version of the image by turning off the changes you've made. Your original image remains continuously available, like an archival negative, but it can always be further processed.

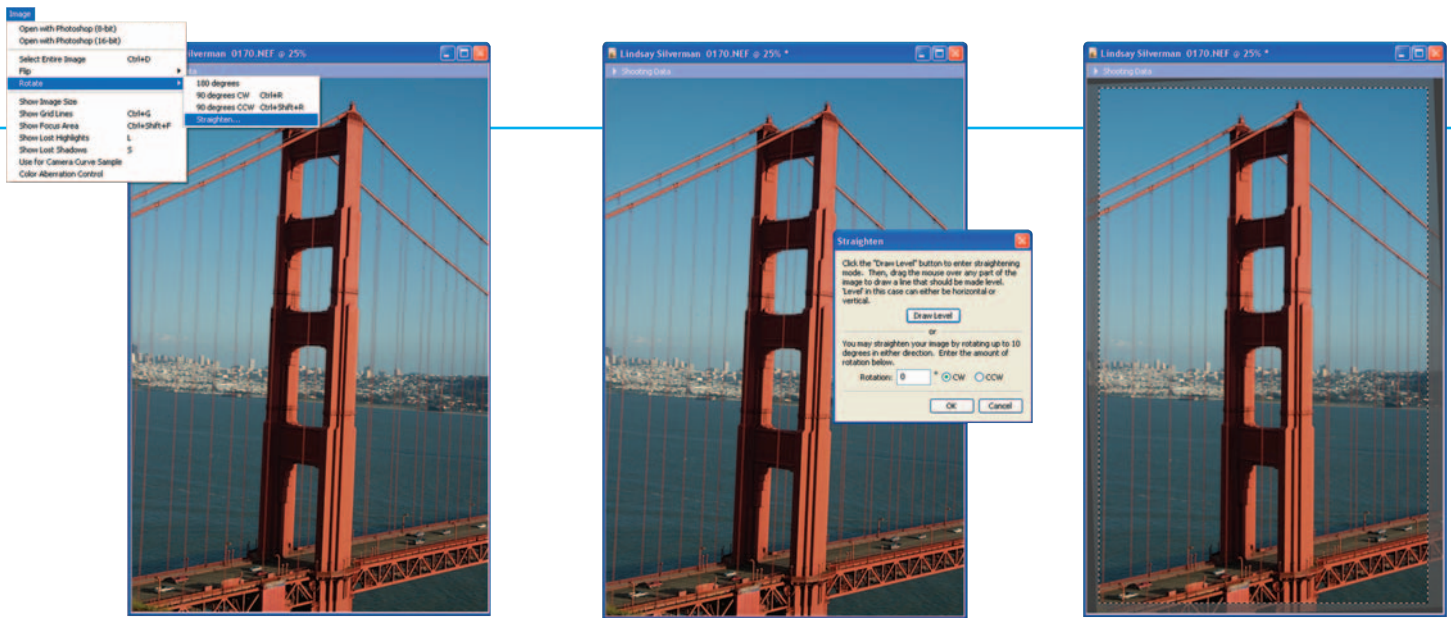


USER-FRIENDLY INTERFACE
The intuitive interface gives you easy access to a wide range of controls.



LCH EDITOR LETS YOU PROCESS YOUR IMAGES DIFFERENTLY

Unleash your ideas. Use the LCH Editor to make changes to your image related to lightness, color lightness, color saturation and color hue. You can adjust any setting and take precision control to achieve your desired vision.



STRAIGHTEN FUNCTION

To correct for tilted horizon lines, the Straighten function allows up to a $\pm 10^\circ$ rotation of your image and enables you to designate a horizontal or vertical reference using a simple drawing tool.

Also, when you use the NEF file compression mode, a built-in option that can reduce the size of an uncompressed NEF by 50 to 60 percent, the fine details can be rendered without concern for excessive artifacting. In addition, the smaller file size of NEFs versus TIFFs saves considerable disk space while delivering superior image quality and versatility.

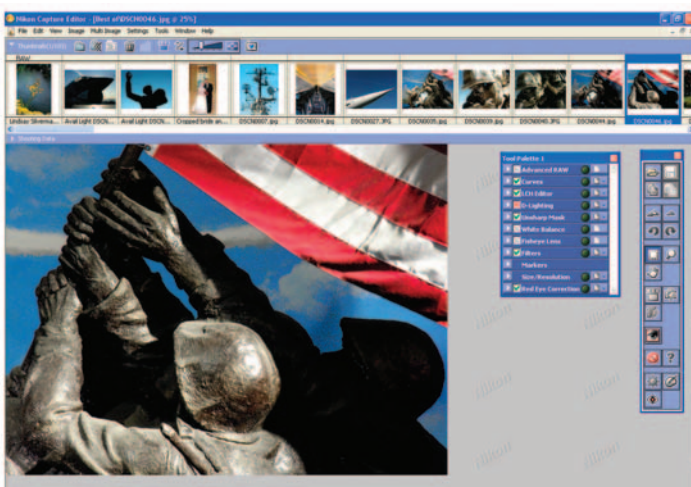
Maximum Flexibility

NEF is a very flexible file and can exist in various configurations.

Original NEF generated using a Nikon Digital SLR can be processed and edited using all of Capture's and PictureProject's tools.

Original NEF generated using a Coolpix 8400 and 8800 can be processed using Capture's Coolpix compatible tools and all of PictureProject's tools.

Converted NEF: a file that was originally a JPEG or TIFF which is copied into NEF through Capture software. Converted NEF files can be edited/processed using the Coolpix compatible tools.



MULTI-IMAGE WINDOW LETS YOU VIEW AND EDIT WITH SPEED AND ACCURACY

Not only does the Multi-Image Window allow you to browse your images with ease for editing and selection, it also lets you choose one image to act as the master image and select unlimited subordinate images. Any work done on the selected master image will automatically be applied to the subordinate images. Just choose save all and all the settings will be saved with one click. This time saver will make your workflow much quicker.

Scanned NEF: is generated from Nikon Scan software used with a Nikon film scanner and saved in the NEF file. This Scanned NEF can be edited/processed using the Coolpix compatible tools, for any edit changes made within Nikon Scan, those changes will be reflected when the file is opened in Capture.

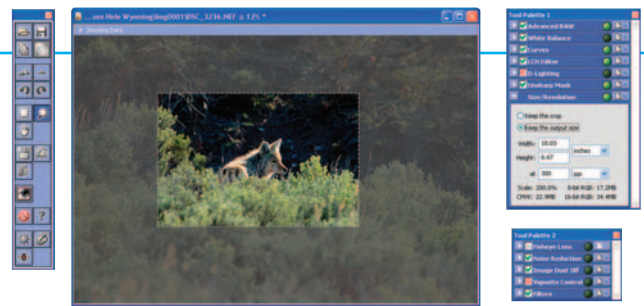
Capture is also a robust tool for professional image enhancement of JPEGs and TIFFs, offering cropping, size and resolution adjustment, unsharp masking, color balance adjustment, batch file conversion, camera custom setting management, and other important features. Capture allows NEF files to be saved as JPEGs or TIFFs, and you can convert a JPEG or TIFF file into a converted-NEF. In addition, Nikon supplies a NEF plug-in so you can edit your images in Adobe® Photoshop®.

Rich Functionality

Capture offers a comprehensive arsenal of processing/management functions that enable you to execute highly refined image

manipulation while streamlining your workflow. In addition to user favorites such as Image Dust Off* and the LCH (Luminosity, Chroma, Hue) Editor, the latest version of Capture introduces important enhancements and additions, including these:

- Improved processing algorithms, enhanced noise reduction, and a faster, multi-thread color management system deliver both accelerated processing and significantly improved tonal gradation.
- The redesigned tool palettes give you quicker access to the tools you use most.
- The multi-image window offers faster thumbnail display and loading, more efficient batch processing, a dedicated menu, and additional features, such as a folder tree and a file delete function, for improved productivity.
- Professional nik Filter™ plug-ins enable integration of popular special effects at the processing level.
- Wireless remote capability (with the optional WT-2A Wireless Transmitter) gives you control of a wide range of camera settings for the D2x digital SLR.



Cropping Tool
The Crop tool allows you to cut away the extraneous with exceptional precision to reveal a compelling image.

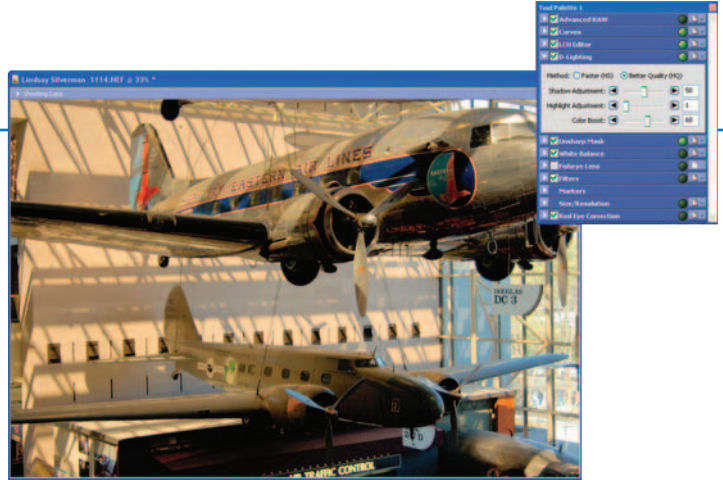
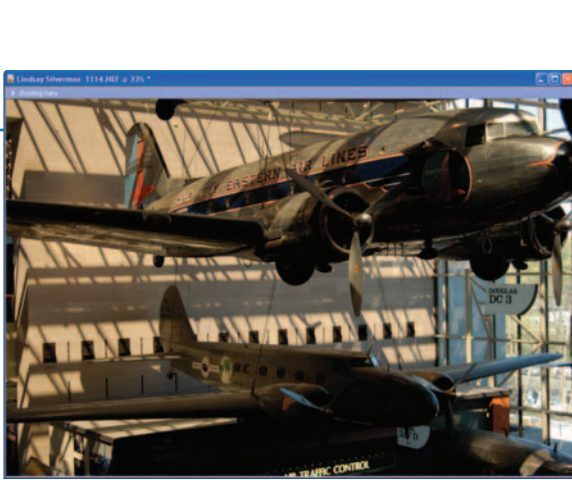
Capture's Fisheye Transform tool

Let's you modify images taken with the AF DX 10.5mm f/2.8G Nikkor lens to resemble images with a normal wide lens. Additionally, when you select, include areas where there is no image data, you can create exciting panoramic images.



Final panoramic image



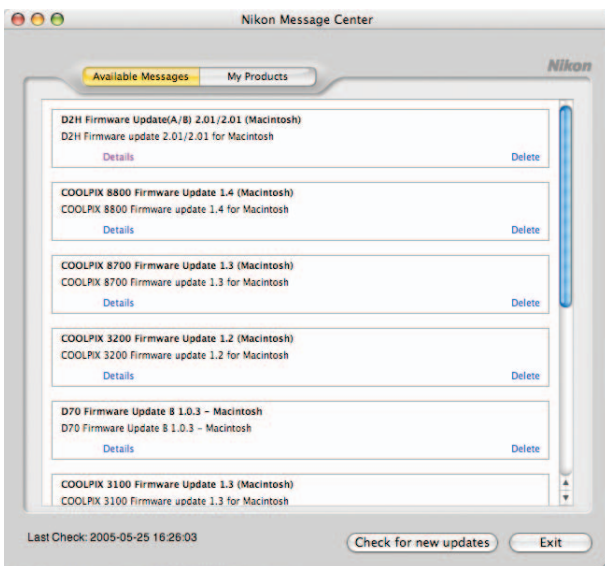


NIKON'S NEW D-LIGHTING TOOL

Nikon's new D-Lighting tool enables you to automatically or manually adjust exposure to accentuate overly dark or bright portions of your image to reveal otherwise hidden details and color vibrance.

- Nikon's new D-Lighting tool enables you to automatically or manually adjust exposure to accentuate hidden details in overly dark or bright portions of your image.
- The Straighten function allows up to a $\pm 10^\circ$ rotation of your image and enables you to designate a horizontal reference using a simple drawing tool.
- Support for the Nikon Message Center allows automatic software updates.
- Markers are an exciting new feature that let you install a series of internal markers within a file to identify locations at which a change has been performed. Later, at any time you can instantly move to each selected Marker position, allowing you to review the processed image at each stage of Marker placement. In effect, this tool enables you to view multiple versions of the image and save each version either within the original NEF or outside the NEF as your selected JPEG or TIFF. It's a very high performance tool that provides you with a smooth and versatile workflow enhancement.

Together, NEF and Capture give you maximum power to adjust and manage your digital images from capture to archive in ways simply unavailable with other file/software combinations.



NIKON MESSAGE CENTER LETS YOU KNOW WHEN IT'S TIME TO UPGRADE

Whether there's a new release of software or an upgrade to your Digital SLR or Coolpix camera, the Message Center will let you know as soon as it becomes available. Nikon makes sure you are up to date with the latest tools and upgrades.

Nikon Products Supporting NEF

The Nikon cameras currently capable of producing NEF images are the D1™ series, D2x™, D2Hs™, D2H™, D100™, D70™, D70s™ and D50™ digital SLRs and the Coolpix® 8800, 8400, 8700, 5700, 5400 (requires July 2004 firmware upgrade), and 5000 (requires October 2002 firmware upgrade). In addition, Nikon scanners can save scanned images as NEF files, offering you maximum versatility for your film images.



nik Color Efex Pro™ 2.0

PRODUCT NUMBERS:

Express Edition: 25329
Standard Edition: 25311
Select Edition: 25312
Complete Edition: 25313

THE NEXT GENERATION OF DIGITAL PHOTOGRAPHIC FILTERS

From nik multimedia, the recognized leader in digital photographic filters, four nik Color Efex Pro 2.0 editions allow you to enhance, stylize, and correct your digital images. Featuring 16-bit functionality and full compatibility with the latest version of Nikon Capture and PictureProject, these powerful, updated editions provide up to 75 filters for creating true photographic effects on NEFs, JPEGs, and TIFFs.

Powerful Filters for Powerful Images

Incorporating advanced digital filter technology, nik Color Efex Pro 2.0 filters provide a virtually endless array of transformative photographic effects that can be applied quickly and easily to your images. The proprietary True Light® color-processing system at the heart of each filter automatically and effectively evaluates each image's unique information, preserving the relationships between colors, contrast, and details to provide optimal, consistent enhancements. This consistency improves your productivity because you can confidently apply a filter with the same settings across a wide range of images with predictable results. In addition, nik Color Efex Pro 2.0 filters automatically adapt to any previous filter adjustment or other change, giving you more options and greater control as you experiment with applying filters in different sequences. The combination of the True Light system and the filters' adaptive capabilities, provides a truly unique system of controlling the light and color in virtually any image.

Four Editions

Available in four editions, nik Color Efex Pro 2.0 allows you to choose a collection of filters that matches your needs:

- The Express Edition provides 15 filters that offer a wide variety of photographic effects, including such key filters as Old Photo, Black and White, which emulates old-fashioned black-and-white photographic styles; Graduated Orange, which adds a gradual amount of orange for creating beautiful sunsets or similar enhancements; and Midnight Blue, which applies a cinematic day-for-night "midnight" effect while introducing a blue cast to the image.
- The Standard Edition adds 4 filters to the 15 in the Express Edition for a broader selection of photographic effects, including key filters for color and light enhancements, such as the Pastel and Graduated Coffee filters. With this edition, you can achieve a range of enhancement and stylization options, from correcting colors and adding light to day-for-night effect and light diffusion.
- The Select Edition adds 26 filters to the 19 in the Standard Edition, enabling professionals and advanced enthusiasts to achieve a much wider range of image enhancement and transformation possibilities: Create professional black-and-white conversions with the B/W Conversion filter, whose color spectrum slider enables you to define the tonality in the final black-and-white image. Apply a photographic soft focus with the Classical Soft Focus filter. Use the Polarization filter to achieve dramatic blue skies in landscapes and skylines. Apply the Midnight filter for soft, light-diffused portraits and outdoor images, using the filter's adjustment sliders to precisely control the effect. And more.
- The Complete Edition adds 30 filters to the Select Edition's collection, offering a dazzling array of 75 traditional and stylizing filters. The choice of creative professionals, the Complete Edition enables a virtually unlimited array of effects as unique as the photographer's imagination. Use the Infrared: Black-and-White filter to convert color images to black-and-white infrared images. Apply the Dynamic Skin Softener filter to smooth skin details. Use the highly versatile reflector filters—Gold, Silver, and Soft Gold—to add foreground light, controlling the direction, placement, falloff, and intensity of the added light. Add just the amount of fog where you need it with the Fog filter. And more.

Wide Compatibility

Compatible with Capture 4.1 or later and PictureProject 1.1 or later, nik Color Efex Pro 2.0 filters support a variety of operating systems:

- PC: Windows® 98 SE through Windows XP or later
- Macintosh: Mac OS X 10.15 or later

User-Friendly Interface

The intuitive interface gives you easy access to a wide range of controls.



New Reflector Filters

The new reflector filters (Complete Edition) allow you to add light to the image foreground, controlling the direction, placement, falloff, and intensity of the light. The highly versatile Soft Gold filter was used here to brighten the details in the foreground.



Precise And Easy Image Enhancement With COMPLETE Edition Filters

Use the Old Photo: Black and White filter to convert color images to black-and-white images.

Front Cover Photo: Top Left: The original photo of the butterfly in full color as captured by D2H and the AF-S Zoom-Nikkor 70-200mm f/2.8 IF-ED
All other versions: Using Nikon Capture's LCH Editor: Hue and Chroma settings – The butterfly appears in different colors, while de-saturating the color for the helping hands.

©2005 Lindsay Silverman

Inside photos provided by – Lindsay Silverman ©2005 and Richard LoPinto ©2005

Nikon Capture 4.3, product number 25291, is available for purchase at your authorized Nikon Specialty dealers or from www.Nikonmall.com.

Owners of Nikon Capture 4.0 or later will be eligible for the Capture 4.3 upgrade at no additional cost by accessing WWW.NIKONUSA.COM, downloading the 4.3 upgrade and installing it over the Version 4.0 that is already installed on your computer's hard drive. Earlier versions of Nikon Capture are not eligible for this upgrade and will require a new purchase of Nikon Capture 4.3.

Please also visit www.captureuser.com for more informative tutorial information about how to use Capture Tools and make your pictures more than you imagined possible.

Adobe and Photoshop are either registered trademarks or trademarks of Adobe Systems Incorporated in The United States and/or other countries.

nik Color Efex Pro 2.0 filters is a registered trademark of nik multimedia, Inc.

All products indicated by trademark symbols are trademarked and/or registered by their respective companies.

Specifications and equipment are subject to change without any notice or obligation on the part of the manufacturer. 8/05

©2005 NIKON INC.

DSLR-CAPTURE-01



At the heart of the image™