

COOLPIX.
incredible digital



Nikon
COOLPIX S600

- 10.0**
Effective
Megapixels
- 4X**
Optical
Wide-Angle
Zoom-NIKKOR
Glass Lens
- 2.7"**
Incredible,
Bright LCD
Screen
- VR**
Optical
Image
Stabilization
- 3200**
ISO
Capability



Nikon Inc.
1300 Walt Whitman Road, Melville, N.Y. 11747-3064 nikonusa.com / 1800-Nikon-UX



At the heart of the image™

COOLPIX S600

COOLPIX **STYLE**
brilliance made beautiful

CDP-S600TM-01-01/08 / 07-625



stunningly fast
astonishingly small

sharp and smart with a style of its own

Nikon
COOLPIX S600

Key Features

- **10.0 megapixels** for stunning prints as large as 16 x 20 inches
- **4x Optical Wide-Angle Zoom-NIKKOR Glass** quality optics provide exceptional images with 28mm wide angle capability
- **Optical VR image stabilization**
- **ISO 3200** capability**
- **Active Child Mode** – automatically tracks and focuses on the subject when the shutter button is pressed Exposures modes (P/M)
- **Incredible, bright 2.7-inch** high resolution, wide viewing angle TFT LCD monitor with anti-reflection coating
- **Pastel mode** – creates a soft, impressionistic image when enabled before shooting
- **Nikon In-Camera Innovations**
 - **In-Camera Red-Eye Fix™** automatically fixes most instances of red-eye in the camera. You may never see red-eye again
 - **Improved Face-Priority AF** Nikon's face-finding technology that automatically focuses on faces faster than ever
 - **D-Lighting** rescues dark or backlit images by improving brightness and detail where needed

The world's smallest body*



From the solid feel and comfortable grip of the world's smallest compact stainless steel body to its large, easy-access control buttons and 2.7-inch high-resolution LCD monitor, the COOLPIX S600 is a joy to carry and to take pictures with.

The world's fastest start up time*



All functions are optimized for the world's fastest start up time, freeing you to capture special moments as you experience them. The COOLPIX S600 has a power-up time within 0.7 seconds.

ISO 3200 capability**



Light sensitivity range up to ISO 3200 creates new opportunities to take sharper, more natural looking photos in lower light conditions, or to capture fast-moving subjects with outstanding clarity.



Better pictures in lower light

Optical VR image stabilization



without vibration reduction

with vibration reduction

Nikon's optical VR image stabilization compensates for camera shake to produce clearer, sharper results in lower light or unsteady conditions. Active full time, VR's stabilizing effect also aids in smooth, easy framing and shooting.



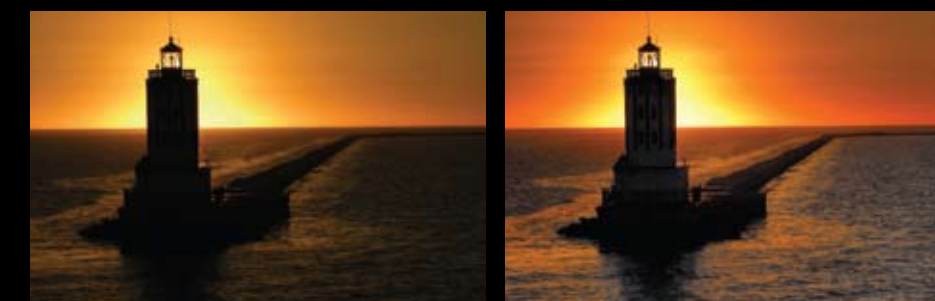
VR image stabilization

In-Camera Premium Features!



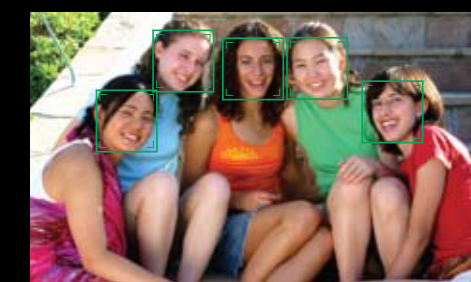
In-Camera Red-Eye Fix™

This in-camera feature automatically fixes most typical occurrences of red-eye.



D-Lighting

Compensates for underexposed images or insufficient flash by automatically adding light and detail to selected shots where needed, without affecting properly exposed areas.



Face-Priority AF

Automatically finds and focuses on up to 5 faces to ensure superb portraits with clear, crisp focus.



Simply better portraits

* Among compact digital cameras equipped with 28mm (35mm format) zoom lens and optical vibration reduction as of January 29, 2008 (according to research conducted by NIKON CORPORATION).
** ISO 3200 is available only for image sizes of 5M (2592 x 1944) or smaller.