



COOLPIX S50 · S50c

At the heart of the image™



COOLPIX. STYLE
brilliance made beautiful



COOLPIX STYLE

VR Optical Image Stabilization

Stability advanced... images enhanced



without vibration reduction



with vibration reduction

You can shoot sharper, clearer and without blur with Nikon's ingenious VR Optical Image Stabilization technology improves stability by automatically compensating for camera shake. With Nikon Optical VR Image Stabilization you can shoot at shutter speeds up to three stops slower than other wise possible without camera shake blurring your pictures.



VR image stabilization

3x Optical Zoom - Nikkor glass lens

High quality lenses deliver high quality pictures.



38mm



114mm

The Zoom Nikkor glass lens gives you the power of 3x optical zoom lens, 38mm-116mm (35mm equivalent) while Macro capability lets you get as close as 1.6 inches. This combination is supported by Nikons' world-renowned optical technology delivering crisp, clear images.

3x Optical Zoom-Nikkor Glass Lens plus 4x digital zoom equals 12x zoom range

New 1600 ISO Capability

See what you've been missing.



Better pictures in lower light

High light sensitivity up to ISO 1600 opens up a whole new world of photo opportunity. Allowing you to tackle scenes and situations far beyond the capabilities of conventional compacts, high ISO offers you new power to capture fast-moving objects with outstanding clarity and gives you great exposure in significantly lower light.

Wider Enjoyment

with Huge, Bright, High Resolution LCD Screen

170°
wide viewing



The **COOLPIX S50 and S50c** are equipped with a huge, bright 3.0" LCD great for viewing images anywhere, anytime. The impressive 170 degree wide viewing angle makes it easier for everyone to see and enjoy images. The larger high resolution LCD lets you make the most of smooth, sharp movies, great-looking stills and exciting Pictmotion shows.

S50 · S50c



Nikon In-Camera Innovations

Makes taking great pictures easy!

Rotary Multi Selector

Swift circular scrolling action allows speedy image browsing at up to 10 images per second. On-screen icon with cursor tracks scrolling for easy feature selection.

Auto Image Rotation

Detects pictures that have been taken with the camera held vertically and automatically rotates the image for in-camera LCD playback.

Anti-Shake Button

Overcomes camera shake by activating optical VR image stabilization, High-Sensitivity mode and Best Shot Selector all at once, providing images that are steady and sharp.

In-Camera Cropping

Allows you to crop out the part of the image you don't want and keep the part you do.

Blur Warning

Alerts you to a blurry image.

Noise Reduction Mode

Minimizes digital artifacts in long exposures.

Best Shot Selector

Enables the camera to take a series of photos and automatically select the one with the sharpest focus.

Voice Memo Function

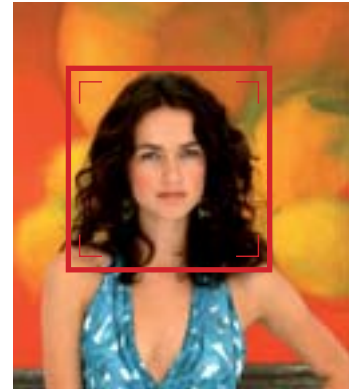
Records up to 5 hours of sound that can be then attached to an image, or played back alone as a wav file.

Date and Time Imprinting

Available to document the exact time and date that your photo is taken.



In-Camera Red-Eye Fix™ This in-camera feature automatically fixes most typical occurrences of red-eye.



D-Lighting Compensates for underexposed images or insufficient flash by automatically adding light and detail to selected shots where needed -- without affecting properly exposed areas.

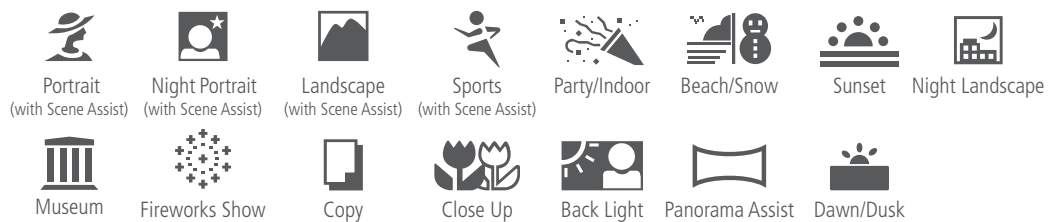
One-Touch Portrait Your shortcut to three unique innovations, it offers instant access to Face-priority AF and In-Camera Red-Eye Fix™ for optimized image capture and lets you transform exposure with Nikon's powerful D-Lighting advantage.



Simply better portraits

Face-Priority AF Automatically finds and focuses on people's faces to ensure superb portraits with clear, crisp focus.

Innovative Automatic Features Simply Brilliant



The COOLPIX S50 and S50c feature 15 specially programmed modes to automatically handle focus, exposure, white balance and other adjustments that help you take great pictures easily.

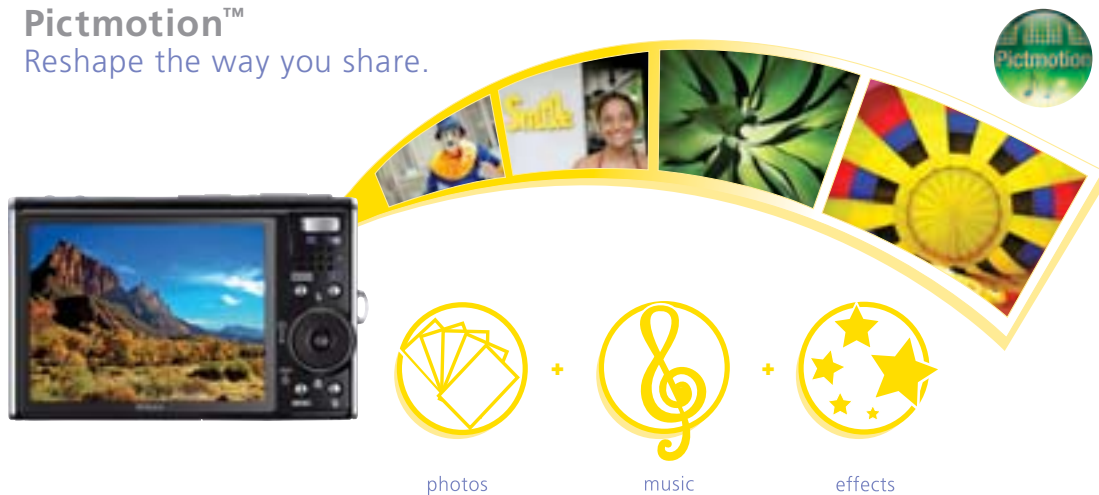




Beauty has always been in the eye of the beholder,
now it's in the hands of the photographer.

Pictmotion™

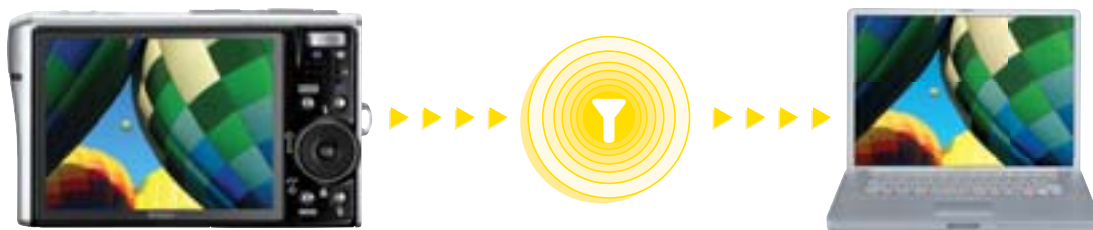
Reshape the way you share.



Pictmotion™ allows you to select your favorite images and movies, decide on a style, and pick one of five pre-installed music files or add your own*. Pictmotion™ automatically combines your elements in a polished production, with transitions and style synced to your music.

COOLPIX CONNECT 2*

See It. Shoot It. Send It. Store It.



See It. Shoot It. Send It. Store It. Wow! Imagine being able to take a picture of your vacation and show it to friends across the world in mere seconds or even store it on a server to download when you return! The new **COOLPIX S50c** with its COOLPIX CONNECT 2 service allows you to both email and store your pictures remotely. The new COOLPIX CONNECT 2 service lets you choose a photo, select recipients from your in-camera email address list, and send the picture straight from the camera for viewing on a PC anywhere. In addition, this new service allows you to upload up to 2GB of images remotely, store them, and/or retrieve them for download at a later time. The **COOLPIX S50c** with its COOLPIX CONNECT 2 service makes this Nikon's most advanced picture sharing service ever!

* Compatible with domestic wireless LANs in Europe and Asia and with open public Wi-Fi hot spots across the U.S.A.

Accessories



Included: Wrist Strap, USB Cable, Audio Video Cable, Rechargeable Battery EN-EL8 (S50 only), AC Adapter EH-64 (S50 only), Battery Charger MH-62 (S50 only), PictureProject™ CD-Rom

Leather Case (optional)

AC Adapter EH-64 (S50 optional)

COOLPIX S50 • S50c

Key Features

7.2 Megapixels for beautiful prints up to 16 x 20 inches.

Optical VR Image Stabilization often compensates for camera shake for sharper pictures.

High Light Sensitivity up to ISO 1600

High Quality 3x Optical Zoom-Nikkor Glass Lens for incredibly sharp, clear images.

Huge, Bright 3.0 Inch LCD for easy viewing and playback of pictures.

Wireless Enabled COOLPIX S50c with new COOLPIX CONNECT 2.

Stylish, All-Metal (approximately 3/4") sleek, wave design fits in your pocket.

Auto Image Rotation will automatically rotate vertical images in the camera.

Rotary Multi Selector lets you speed dial your selections at 10 fps.

Ultra-Light Weight of approximately 4.4 oz. (without battery and SD card).

Nikon In-Camera Red-Eye Fix™ automatically fixes most instances of red-eye.

Nikon D-Lighting automatically brightens the dark areas in the picture when in playback mode.

Face-Priority AF automatically finds a face and focuses on it for crisp, sharp portraits.

15 Scene Modes to guide you in taking better pictures, easily and automatically.

Battery Life shoot approximately 130 images on a single charge of the included lithium-ion (Nikon EN-EL8) rechargeable battery.

Adjustable Graphic User Interface allows you to change the interface to view either the icon view or the traditional menu item view.

In-Camera Help button instantly displays an explanation for all the functions within all menus.

Take Great Close-Up Pictures with the ability to focus as close as 1.6 inches from your subject.

Movie Mode with sound available at 30 frames per second for TV quality videos.

13MB Internal Memory allows you to begin taking pictures immediately.

Print Directly to a Printer by connecting directly to a PictBridge-compatible printer.

SDNC card capability.



COOLPIX® incredible digital



Built-in flash

**3x Optical
Zoom-Nikkor
Glass Lens**

COOLPIX S50 Actual size

S50 3.6" w x 2.3" h x 0.8" d
(only 4.4 oz!)

S50c 3.8" w x 2.3" h x 0.8" d
(only 4.4 oz!)



Mode Button

Huge, Bright 3.0" LCD
Monitor for high
visibility in daylight



**less
than
0.8"
thick**

7.2

Effective
Megapixels

3X

Optical
Zoom-Nikkor
Glass Lens

3.0"

Huge, Bright,
LCD Screen

VR

Optical Image
Stabilization

COOLPIX S50 • S50c

Digital Camera Specifications



**Better pictures
in lower light**

**Freedom with
wireless image
transfer**

**In-camera
slideshow
with music**

**VR image
stabilization**

**Simply better
portraits**

Effective pixels	S50/S50c: 7.2 million
Image sensor	S50/S50c: 1/2.5-in. CCD; total pixels: approx. 7.41 million
Lens	3x Zoom-Nikkor; 6.3-18.9mm (35mm [135] format picture angle: 38-114mm); f/3.3-4.2; 12 elements in 9 groups; Digital zoom: up to 4x (35mm [135] format picture angle: 456mm)
Focus range (from lens)	S50/S50c: 1 ft. (30cm) to infinity (∞), Macro close-up mode: 1.6 in. (4cm) to infinity (∞)
Monitor	S50/S50c: 3.0-in., 230,000-dot, wide viewing angle TFT LCD with anti-reflection coating
Storage media	S50/S50c: Internal memory (approx. 13 MB), SD memory cards
Movie	S50/S50c: With sound: TV movie (640) at 30fps, Pictmotion (640) at 10fps, Small size (320) at 30fps, Smaller size (160) at 15fps; Without sound: Time-lapse movie at 30fps, Stop-motion movie (640) at 5, 10, 15fps, Electronic VR (Vibration Reduction) available (except for Time-lapse movie)
Image size (pixels)	S50/S50c: 3072 x 2304 (High: 3072*/Normal: 3072), 2592 x 1944 (Normal: 2592), 2048 x 1536 (Normal: 2048), 1024 x 768 (PC: 1024), 640 x 480 (TV: 640), 3072 x 1728 (16:9)
Vibration Reduction (VR)	S50/S50c: Optical lens shift VR
ISO sensitivity	S50/S50c: ISO 100, 200, 400, 800, 1600, Auto (auto gain ISO 100-800)
Pictmotion	S50/S50c: 5 styles selectable to playback movies or up to 200 still images, 5 music files pre-installed, max. 10 music files loadable*
Built-in flash	S50/S50c: Range: (W) 12 in. to 19 ft. 8 in. (0.3 to 6.0m), (T) 12 in. to 13 ft. 1 in. (0.3 to 4.0m)
Interface	S50: Hi-Speed USB S50c: Hi-Speed USB, IEEE 802.11b/g
Languages	S50/S50c: Czech, Danish, German, English, Spanish, French, Indonesian, Italian, Dutch, Norwegian, Polish, Portuguese, Russian, Finnish, Swedish, Chinese (Simplified and Traditional), Japanese, Korean, Thai
Power sources	Rechargeable Li-ion Battery EN-EL8 (supplied), AC Adapter EH-64 (S50: optional, S50c: supplied)

Battery life	S50/S50c: Approx. 130 shots with EN-EL8 battery (based on CIPA standard)
Dimensions (WxHxD)	S50: Approx. 3.6 x 2.3 x 0.8 in. (92.5 x 59 x 21 mm) (excluding projections) S50c: Approx. 3.8 x 2.3 x 0.8 in. (97.5 x 59 x 21 mm) (excluding projections),
Weight	S50/S50c: Approx. 4.4 oz. (125 g) (without battery and SD memory card)
Supplied accessories**	Rechargeable Li-ion Battery EN-EL8, AC adapter EH-64 (S50c), Battery Charger MH-62 (S50), AV/USB Cable UC-E12, Strap, Printer Dock Accessory: Dock Insert PV-12, PictureProject CD-ROM
Optional accessories	S50: Battery Charger MH-62, Case S50c: AC Adapter EH-64, Case
	* Via PictureProject for Windows only; up to 10 other pieces of music (with total duration of 10 minutes) can be loaded.
	** Supplied accessories may differ by country or area.

PictureProject System Requirements

OS	Macintosh: Mac OS X version 10.3.9, 10.4.x
Windows	Windows Vista (32bit), Windows XP Home Edition/Professional, Windows 2000 Professional pre-installed models
Note	CD-ROM drive required for installation. Only built-in USB ports are supported

Microsoft® and Windows® are either registered trademarks or trademarks of Microsoft Corporation in the United States and/or other countries. Macintosh® and QuickTime® are either registered trademarks or trademarks of Apple Computer Inc. in the United States and/or other countries. The SDHC logo is a trademark. ImageLink and the ImageLink print system logo are trademarks of Eastman Kodak Company. PictBridge is a trademark. D-Lighting technology is provided by Apical Limited. Pictmotion contains patented technologies provided by muvee Technologies Pte. Ltd. The FotoCall logo is a trademark. The FotoNation logo is a trademark. Products and brand names are trademarks or registered trademarks of their respective companies.

Specifications and equipment are subject to change without any notice or obligation on the part of the manufacturer. February 2007 ©2007 NIKON CORPORATION



Nikon Inc.,
1300 Walt Whitman Road, Melville, N.Y. 11747-3064 nikondigital.com / 1800-Nikon-UX