



COOLPIX® P50

At the heart of the image™



COOLPIX® PERFORMANCE

passion made powerful

8.1
Effective
Megapixels

3.6X
Optical
Wide Angle
Zoom-Nikkor
Glass Lens

2.4"
Incredible,
Bright LCD
Screen

VR
Electronic
Image
Stabilization

2000
ISO
Capability

Classic Design, Contemporary Performance



Key Features

8.1 Megapixels for stunning prints as large as 16 x 20 inches

3.6x Optical Wide Angle Zoom-Nikkor Glass Lens – quality optics provide exceptional images with 28mm wide-angle capability

Incredible, Bright 2.4-inch High Resolution LCD and Optical Viewfinder make it easy to compose and share your pictures with friends and family

Optical Viewfinder for taking pictures in any type of lighting conditions

Program and Manual Exposure Modes give you personal control over camera operation

Auto adjusts up to ISO 2000 – keep shooting, even in lower light

In-Camera Red-Eye Fix™ automatically fixes most instances of red-eye in the camera. You may never see red-eye again

Face-Priority AF – Nikon's face-finding technology that automatically focuses on up to 12 faces

D-Lighting rescues dark or backlit images by improving brightness and detail where needed



VR Electronic Image Stabilization



without vibration reduction



with vibration reduction

VR Electronic Image Stabilization takes camera movement data from a built-in angular velocity sensor and applies in-camera image processing to turn blurred images into beautifully clear results, on the spot or anytime later.



VR image stabilization

Optical Viewfinder



Keep taking great pictures in any type of light. The optical viewfinder enables you to compose your picture even when the sun is at its brightest.

Advanced Shooting Modes



The new improved Mode dial provides quick access to greater personal control over camera operation and the unlimited creative possibilities offered by Programmed Auto [P] and Manual [M] exposure modes

ISO 2000 capability



Better picture in lower light

Extended light sensitivity range of ISO 50 to ISO 2000 and the new image-processing engine's ability to preserve high image quality at high ISO settings provide new opportunities to shoot more effectively in lower lighting conditions.

8.1 Megapixels of Pure Imaging Power



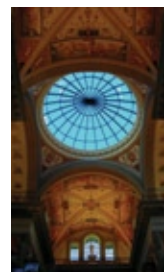
That's plenty of sharp resolution to capture the finest details, crop creatively and produce beautiful enlargements. Optimizing performance and color reproduction is an advanced new image processing engine. And the quality optics of a 28-102mm Zoom-Nikkor lens (35mm equivalent) maximizes compositional freedom.

Nikon In-Camera Innovations Makes taking powerful pictures easy!



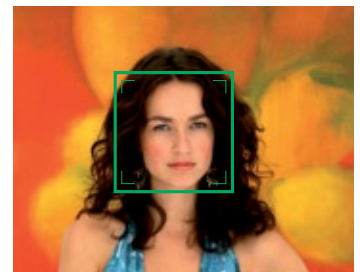
In-Camera Red-EyeFix™

This in-camera feature automatically fixes most typical occurrences of red-eye.



D-Lighting

Compensates for underexposed images or insufficient flash by automatically adding light and detail to selected shots where needed, without affecting properly exposed areas.



Face-Priority AF

Automatically finds and focuses on up to 12 faces to ensure superb portraits with clear, crisp focus.



Simply better portraits

COOLPIX P50

Digital Camera Specifications



Simply better
portraits



VR image
stabilization



Better pictures
in lower light

Effective pixels:	8.1 million
Image sensor:	1/2.5-in. CCD; total pixels: approx. 8.29 million
Lens:	3.6x Zoom-NIKKOR; 4.7-17.0mm (35mm [135] format picture angle: 28-102mm); f/2.8-5.6; 7 elements in 6 groups; Digital zoom: up to 4x (35mm [135] format picture angle: 408mm)
Focus range: (from lens)	50cm (1 ft. 7.7 in.) to infinity (∞); Macro close-up mode: 5cm (2 in.) to infinity (∞)
Monitor:	2.4-in., 115,000-dot, TFT LCD with anti-reflection coating
Storage media:	Internal memory (approx. 52 MB), SD/SDHC memory card compatible
Image size:	3246 x 2448 (8M), 2592 x 1944 (5M), 2048 x 1536 (3M), 1600 x 1200 (2M), 1280 x 960 (1M), 1024x768 PC, 640 x 480 TV, 3264 x 2176 (3:2), 3200 x 1800 (16:9)
Vibration Reduction: (VR)	VR Electronic Image Stabilization
ISO sensitivity:	ISO 64, 100, 200, 400, 800, 1600, 2000, Auto (auto gain ISO 64-1000)
Power sources:	Two AA alkaline (supplied), lithium or oxyride batteries, two EN-MH1 rechargeable Ni-MH batteries (optional), EH-65A AC adapter (optional)
Battery life:	Approx. 140 shots with 2 alkaline AA-size batteries (based on CIPA standard)
Dimensions: (WxHxD)	Approx. 94.5 x 66 x 44 mm (3.8 x 2.6 x 1.8 in.) excluding projections
Weight:	Approx. 160 g (5.6 oz.) without battery and SD memory card
Supplied accessories*:	Two 1.5V LR6 AA-size alkaline batteries, USB Cable UC-E6, Audio Video Cable EG-CP14, Strap AN-CP17, Dock Insert PV-16, COOLPIX Software Suite CD-ROM
Optional accessories:	Battery Charger MH-71, Rechargeable Battery EN-MH1 (set of two batteries), AC Adapter EH-65A

*Supplied accessories may differ by country or area.

System Requirements:

OS **Macintosh:** Mac OS X version 10.3.9, 10.4.x
Windows: WindowsVista (32bit), Windows XP Home Edition/Professional pre-installed models

Note: CD-ROM drive required for installation. Only built-in USB ports are supported

Microsoft®, Windows® and Windows Vista™ are either registered trademarks or trademarks of Microsoft Corporation in the United States and/or other countries. Macintosh®, Mac® OS and QuickTime® are either registered trademarks or trademarks of Apple Inc. in the United States and/or other countries. The SDHC logo is a trademark. ImageLink and ImageLink print system logo are trademarks of Eastman Kodak Company. PictBridge is a trademark. D-Lighting technology is provided by Apical Limited. The FotoNation logo is a trademark. The FotoConnect logo is a trademark. Products and brand names are trademarks or registered trademarks of their respective companies.

Specifications and equipment are subject to change without any notice or obligation on the part of the manufacturer. August 2007 ©2007 NIKON INC.



Nikon Inc.,
1300 Walt Whitman Road, Melville, N.Y. 11747-3064 nikonusa.com / 1800-Nikon-UX