



COOLPIX L2/L3/L4



COOLPIX LIFE

memories made easy

memories
made easy



Innovative features
and a brilliantly
easy format make
beautiful memories
sweet and simple.

6.0/5.1/4.0
L2/L3/L4 Effective Megapixels

2"
Big, Bright
LCD Screen

3X
Optical Zoom
Nikkor Glass Lens

Nikon's Exclusive Feature System

Makes taking great pictures effortless.



D-Lighting

Compensates for underexposed areas or insufficient flash by automatically adding light and detail where needed.



In-Camera Red-Eye Fix™

This in-camera feature automatically fixes most occurrences of red-eye. You may never see red-eye again.



Face Priority AF ensures superb portraits with crisp focus (in Portrait Scene). This feature automatically finds the subject's face and focuses on it.



In-Camera Cropping allows you to crop out the part of the image you don't want and keep the part you like.



Best Shot Selector

Camera takes a series of photos and selects the one with sharpest focus.



Saturation Mode

User-selectable control of color saturation.



Noise Reduction Mode

Minimize digital artifacts in long exposures.

Movie Recording allows you to record movies in three modes: TV size (640), small (320) and smaller (160). **L2/L3** with sound; **L4** without sound.

Date and Time Imprinting is available to document the exact time and date that your photo is taken.

Voice Memo Function records up to 20 seconds of sound that can be attached to an image.

3x Optical Zoom - Nikkor Lens

High quality lenses deliver high quality pictures



3X Optical Zoom – Nikkor Lens plus 4x digital zoom equals 12x zoom range

The Zoom Nikkor lens gives you the power of 3x optical zoom lens, 38-116mm (114mm for **COOLPIX L4**) while Macro capability lets you get as close as 3.9 in (**L2/L3**) and 1.6 in (**L4**). This combination is supported by Nikons' world-renowned optical technology delivering crisp, clear images – all of which help realize the full potential of our high resolution 4.0, 5.1 and 6.0 megapixel CCDs.

The **COOLPIX L2/L3/L4** exclusive image processing technology takes true-to-life images a step closer to reality. A 256-segment Matrix Metering system enables optimal exposures in even the most challenging lighting situations.



Matrix Metering optimal exposure is measured by evaluating 256 areas of the frame.

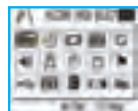
Big, Bright 2" LCD

Makes shooting and sharing images easier

A new interface has been designed that can be viewed as icons or as a list. If you need assistance, just press the Help Button. It will explain the function in the main menu. Nikon makes it easy!



View as a List



View as Icons

Big, Bright LCD screen and new enhanced Graphic User Interface with Help Button



Intuitive Automatic Features

Simply Smart



Landscape



Sunset



Fireworks Show



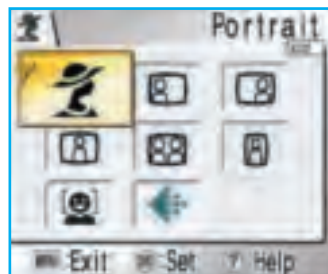
Sports



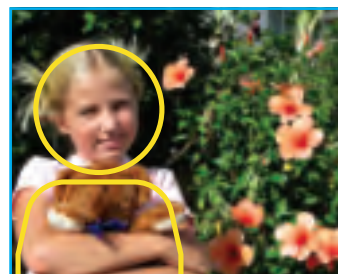
The **COOLPIX L2/L3** feature 16 (**L4** features 15) specially programmed modes to automatically handle focus, exposure, white balance and other adjustments that help you take great pictures easily. Face Priority AF, an option found in the Portrait Mode, automatically finds a face and focuses on it for you. Plus 4 of the Scene Modes come with Scene Assist which offers selection options to help you compose your pictures with the assistance of framing guides displayed in the monitor. Here's how easy it is!



1. Select **SCENE** on Mode Selector Switch

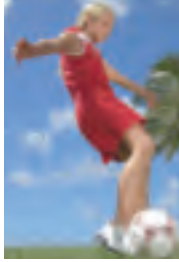


2. Scroll up or down to choose a composition type and set

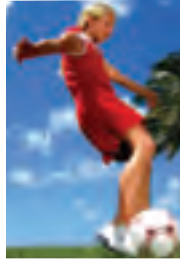


3. Position subject in framing guide and shoot

QuickTime™ Movie with Sound



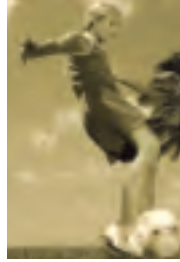
Standard



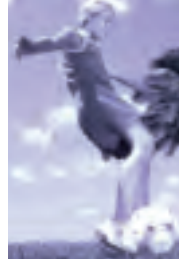
Vivid Color



Black and White



Sepia



Cool

In Movie Mode shoot a Quicktime Movie with sound at up to 30 frames per second, with 5 color shooting options. (L4 without sound)

Software and Accessories



Nikon's PictureProject software, complimentary with your **COOLPIX** purchase. It's designed to extend the enjoyment of taking pictures: transferring images from camera to computer, organizing images so they're easy to find, designing ways to show off pictures and sharing them with friends and family. Photography – from camera to computer to print to e-mail – it's all about fun when you choose Nikon **COOLPIX** with PictureProject!



Case Kit



AC Adapter EH-65A



Battery Recharger MH-71,
NiMH-AA type batteries



Rechargeable
Battery NiMH

Now, shoot up to 250 photos with alkaline AA batteries. The new Nikon **COOLPIX L2/L3/L4** have been designed so you can shoot longer and more often by increasing battery life and adding more internal memory. The up to 32 MB of internal memory lets you shoot even more without an SD card (sold separately). Increase your battery life with optional **COOLPIX** rechargeable AA batteries and you can get up to 450 images per charge!

Transfer Directly to Printer, TV or Web



Print directly from your camera

You can send images directly to print, without the need of a PC, when using PictBridge and USB Direct Print compatible printers.

Connect directly to your TV

Show friends and family the results on a grand scale with the supplied video cable.

One Touch Upload to your computer

Just touch the transfer button once to upload images to your computer using the supplied PictureProject software and supplied USB cable.

COOLPIX L2/L3/L4

Fantastic Features We thought of everything!

COOLPIX L2/6.0 Megapixels; L3/5.1 Megapixels; L4/4.0 Megapixels for beautiful prints up to 16 x 20 inches.

High Quality 3x Optical Zoom-Nikkor Glass Lens (38-116mm COOLPIX L2/L3 and 38-114mm COOLPIX L4) for incredibly sharp, clear images, plus a 4x digital zoom for a total zoom of 12x.

Big, Bright 2.0 Inch LCD for easy viewing and playback of pictures.

Nikon In-Camera Red-Eye Fix™ automatically fixes most instances of red-eye. You may never see red-eye again.

Nikon D-Lighting automatically brightens the dark areas in the picture in playback mode.

Face Priority AF automatically finds the subject's face and focuses on it for crisp, sharp portraits.

16 Scene Modes L2/L3 and 15 Scene Modes L4; 4 with Scene Assist to guide you in taking better pictures, easily and automatically.

Long Battery Life shoot approximately 250 images on a single set of AA alkaline batteries. With the optional rechargeable COOLPIX batteries shoot up to 450 images per charge

Adjustable Graphic User Interface allows you to change the interface to view either the icon view or the traditional menu item view.

In-Camera Help button instantly displays an explanation for all the functions within all menus.

Take Great Close-Up Pictures with the ability to focus as close as 1.6 inches from your subject.

TV Quality Movie Mode with sound available in the COOLPIX L2/L3 at 30 frames per second. COOLPIX L4 movies without sound at 15fps.

32MB (L2/L3) and 16MB (L4) Internal Memory allows you to begin taking pictures immediately.

Print Directly to a Printer by connecting your COOLPIX L2/L3/L4 directly to a PictBridge-compatible printer via the supplied USB cable.



Actual size
L2/L3 3.6" w x 2.4" h x 1.0" d (only 4.2 oz!)
L4 3.4" w x 2.4" h x 1.4" d (only 4.1 oz!)



Big, Bright 2.0" LCD Monitor for high visibility in daylight





At the heart of the *image*™

COOLPIX L2/L3/L4 Digital Camera Specifications

Type of Camera	Compact digital camera
Effective pixels	L2: 6.0 million; L3: 5.1 million; L4: 4 million
CCD	L2: 1/2.5-inch type (6.18 million total pixels) L3: 1/2.5-inch type (5.25 million total pixels) L4: 1/2.5-inch type (4.23 million total pixels)
Image modes	L2: High (2816*), Normal (2816), Normal (2048), PC (1024), TV (640) L3: High (2592*), Normal (2592), Normal (2048), PC (1024), TV (640) L4: High (2272*), Normal (2272), Normal (2048), PC (1024), TV (640)
Lens	L2/L3: 3x Zoom-Nikkor; 6-3-19.2mm (35mm (135) format equivalent to approx.38-116mm); f/3.2-5.3; 5 elements in 5 groups; Digital zoom: up to 4x L4: 3x Zoom-Nikkor; 6-3-19.2mm (35mm (135) format equivalent to approx.38-114mm); f/2.8-4.9; 7 elements in 6 groups; Digital zoom: up to 4x
Focus Range (approx.)	L2/L3: 1 ft. (30cm) to infinity (∞), 3.9 in. (10cm) to infinity (∞) in Macro mode; L4: 1 ft. (30cm) to infinity (∞), 1.6 in. (4cm) to infinity (∞) in Macro mode
LCD monitor	L2/L3: 2.0-inch type, 86,000-dot TFT LCD monitor with brightness adjustment L4: 2.0-inch type, 115,000-dot TFT LCD monitor with brightness adjustment
Storage media	L2/L3: Internal memory (approx. 32MB), SD memory card; L4: Internal memory (approx.10MB), SD memory card
Shooting modes	Auto, 4 modes with Scene Assist (Portrait, Landscape, Sports, Night Portrait), 11 Scene Modes (Party/Indoor, Panorama assist, Beach/Snow, Sunset, Dusk/Dawn, Night Landscape, Close Up Museum, Fireworks Show, Copy, Back Light, Panorama Assist), Voice Recording (L2/L3), BSS (Best Shot Selector), Color options, Blur Warning, Date imprint, Self-timer (10 sec.)
Movie	L2/L3: With sound: TV movie (640) at 30fps/15fps, Small size (320) at 30fps/15fps, Smaller size (160) at 15fps; L4: Without sound: TV movie (640) at 15fps, Small size (320) at 15fps, Smaller size (160) at 15fps
Capture modes	L2/L3: 1) Single, 2) Continuous (approx. 1.7fps), 3) Multi-shot 16; L4: 1) Single, 2) Multi-shot 16
Number of frames	L2: 6M: High (2816*) approx. 8, Normal (2816) approx. 16, 3M: Normal (2048) approx. 29 L3: 5M: High (2592*) approx. 9, Normal (2592) approx. 18, 3M: Normal (2048) approx. 29 L4: 4M: High (2272*) approx. 3, Normal (2272) approx. 7, 2M: Normal (1600) approx. 15
Built-in flash	Range: L2/L3: Approx. 1 ft. - 9 ft. 10 in./0.3-3.0m (w), Approx.1 ft. - 5 ft. 9 in./0.3-1.75m (T) L4: Approx. 1 ft. 4 in. - 9 ft.10 in./0.4-3.0m (w), Approx. 1 ft. 4 in. - 5 ft. 7 in./0.4-1.7m (T); Flash modes:Auto, Auto with Red-eye Reduction (In-Camera Red-Eye Fix), Flash Cancel, Anytime Flash and Slow sync.

Interface	L2/L3: USB, Audio Video output L4: USB, Video output
Supported languages	Total of 12 languages:German/English/Spanish/French/Italian/Dutch/Russian/Swedish/Japanese/Simplified Chinese/Traditional Chinese/Korean selectable in menu display
Power requirements	Rechargeable Ni-MH Battery EN-MH1 x 2, (optional) AA-size battery, LR6 alkaline, ZR6 oxyride, or lithium x 2, (included) AC Adapter EH-65A
Battery life (approx.)	L2: 180 shots with alkaline, 600 shots with lithium, or 320 shots with EN-MH1 L3: 200 shots with alkaline, 630 shots with lithium, or 330 shots with EN-MH1 L4: 250 shots with alkaline, 600 shots with lithium, or 450 shots with EN-MH1 (based on CIPA standard)
Dimensions (wxhxd)	L2/L3: Approx. 3.6 x 2.4 x 1.0 in. (91 x 60.5 x 26mm) L4: Approx. 3.4 x 2.4 x 1.4 in. (86.5 x 60.5 x 34.5mm)
Weight	L2/L3: Approx. 4.2 oz. (120g) (without battery and SD memory card) L4: Approx. 4.1 oz. (115g) (without battery and SD memory card)
Supplied Accessories*	2 AA-type alkaline batteries, USB Cable UC-E6, Audio Video Cable EG-CP14 (L2/L3), Video Cable EG-CP11 (L4), Strap, PictureProject CD-ROM
Optional Accessories	Battery Charger MH-71, Rechargeable Ni-MH Battery EN-MH1 (EN-MH1-B2), AC Adaptor EH-65A

* Supplied accessories may differ by country or area.

PictureProject System Requirements

OS Macintosh: Mac® OS X version 10.1.5 or later (version 10.2.8 or later required for Burn Disc option) / Windows: Windows® XPHome Edition Professional, Windows® 2000 Professional, Windows® Me, Windows® 98SE pre-installed models

RAM Macintosh: 64MB or more recommended/ Windows: 64MB or more recommended (128MB with muvee option)

Hard disk 60MB required for installation

Display 800 x 600 or more with 16-bit color (full color recommended)

Others CD-ROM drive required for installation Only built-in USB ports are supported

Microsoft® and Windows® are either registered trademarks or trademarks of Microsoft Corporation in the United States and/or other countries. Macintosh® and QuickTime® are either registered trademarks or trademarks of Apple Computer Inc. in the United States and/or other countries. The FotoNation logo is a trademark. The SD logo is a trademark. PictBridge is a trademark. D-Lighting technology is provided by Apical Limited. Face-priority AF technology is provided by Identix®. Products and brand names are trademarks or registered trademarks of their respective companies.

Specifications and equipment are subject to change without any notice or obligation on the part of the manufacturer. February 2006 ©2006 NIKON CORPORATION



Everything you need to get started!
2 AA-type alkaline batteries, USB Cable UC-E6, Audio Video Cable EG-CP14 (**L2/L3**), Video Cable EG-CP11 (**L4**), Strap, PictureProject CD-ROM

