



COOLPIX® L15

*At the heart of the image™*



## COOLPIX® LIFE

brilliance made beautiful

**8.0**

Effective  
Megapixels

**3X**

Optical  
Zoom-Nikkor  
Glass Lens

**2.8"**

Huge, Bright  
LCD Screen

**VR**

Optical  
Image  
Stabilization

**1000**

ISO  
Capability

# Easy Auto mode for great pictures-anytime!



## Key Features

**8.0 Megapixels** for stunning prints as large as 16 x 20 inches

**3x Optical Zoom-Nikkor Glass Lens** gets you close to the action

**VR Optical Image Stabilization** minimizes the effect of camera shake

**Incredible, Bright 2.8-inch LCD** makes it easy to view and share pictures

**Adjusts up to ISO 1000** to keep shooting even in lower light

**In-Camera Red-Eye Fix™** automatically fixes most instances of red-eye in the camera. You may never see red-eye again

**Face-Priority AF** – Nikon's face-finding technology that automatically focuses on faces

**D-Lighting** rescues dark or backlit images by improving brightness and detail where needed

## VR Optical Image Stabilization



without vibration reduction



with vibration reduction

Make camera shake a thing of the past. Incorporating highly effective VR Optical Image Stabilization into its slim, compact dimensions, the COOLPIX L15 produces sharper, more satisfactory shots.



VR image stabilization

## Dedicated Shooting and Playback Buttons



A press of the dedicated buttons realizes quick and intuitive mode switching. Shooting settings can be made via the Shooting mode button.

## Easy Auto Mode

Easy Auto mode makes photography even easier by taking control of settings, so you simply turn on the camera and shoot without worrying.

## 8.0 Effective Megapixel Clarity

An impressively high megapixel count delivers pictures with true-to-life color and high-level detail. What's more, it means images can be significantly enlarged, yet still look absolutely stunning.

## AA-size battery compatible for power replenishment anywhere

Compatibility with AA-size batteries, which are widely available around the world, means users can go on shooting virtually anywhere without worrying about recharging or running out of power.

## ISO 1000 Capability



Better pictures in lower light

Accurately measuring available light, the COOLPIX L15 automatically selects the best sensitivity setting. High sensitivity up to 1000 ISO creates new opportunities to take sharper, more natural looking photos in lower lighting conditions

## Nikon In-Camera Innovations **Makes taking great pictures effortless!**

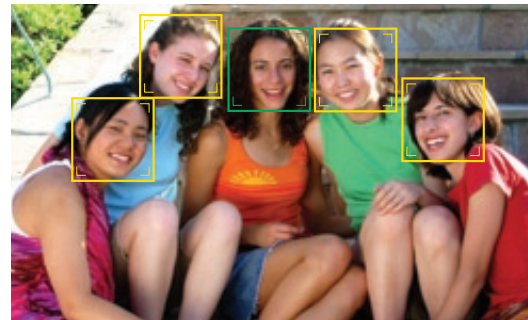


**In-Camera Red-EyeFix™** This in-camera feature automatically fixes most typical occurrences of red-eye.



### D-Lighting

Compensates for underexposed images or insufficient flash by automatically adding light and detail to selected shots where needed, without affecting properly exposed areas.



Simply better portraits

**Face-Priority AF** Automatically finds and focuses on people's faces to ensure superb portraits with clear, crisp focus.

# COOLPIX L15

## Digital Camera Specifications



Simply better portraits



VR image stabilization



Better pictures in lower light

<b>Effective pixels:</b>	8.0 million
<b>Image sensor:</b>	1/2.5-in. CCD; total pixels: approx. 8.29 million
<b>Lens:</b>	3x Zoom-NIKKOR; 5.7-17.1 mm (35mm [135] format picture angle: 35-105mm); f/2.8-4.7; 5 elements in 5 groups; Digital zoom: up to 4x (35mm [135] format picture angle: 420mm)
<b>Focus range:</b> (from lens)	50cm (1 ft. 7.7 in.) to infinity ( $\infty$ ); Macro close-up mode: 15cm (5.9 in.) to infinity ( $\infty$ )
<b>Monitor:</b>	2.8-in., 230,000-dot, TFT LCD with anti-reflection coating
<b>Storage media:</b>	Internal memory (approx. 23 MB), SD/SDHC memory card compatible
<b>Image size:</b> (pixels)	3264 x 2448 (High: 3264*, Normal: 3264), 2592 x 1944 (Normal: 2592), 2048 x 1536 (Normal: 2048), 1024 x 768 (PC screen), 640 x 480 (TV screen), 3264 x 1836 (16:9)
<b>Vibration Reduction:</b> (VR)	VR Optical Image Stabilization (VR)
<b>ISO sensitivity:</b>	Auto (auto gain ISO 64-1000)
<b>Interface:</b>	USB
<b>Power sources:</b>	Two AA alkaline (supplied), oxyride or lithium batteries, two EN-MH1 rechargeable Ni-MH batteries (optional), EH-65A AC adapter (optional)
<b>Battery life:</b>	Approx. 160 shots with alkaline, 580 shots with lithium or 330 shots with EN-MH1 (based on CIPA standard)
<b>Dimensions:</b> (WxHxD)	Approx. 91 x 61 x 29.5 mm (3.6 x 2.4 x 1.2 in.) excluding projections
<b>Weight:</b>	Approx. 125 g (4.4 oz.) without battery and SD memory card
<b>Supplied accessories*:</b>	Two 1.5V LR6 AA-size alkaline batteries, USB Cable UC-E6, Audio Video Cable EG-CP14, Strap AN-CP14, Dock Insert PV-15, COOLPIX Software Suite CD-ROM
<b>Optional accessories:</b>	Battery Charger MH-71, Ni-MH Rechargeable Battery EN-MH1, AC adapter EH-65A

\*Supplied accessories may differ by country or area.

### System Requirements:

**OS** **Macintosh:** Mac OS X version 10.3.9, 10.4.x  
**Windows:** Windows Vista (32bit), Windows XP Home Edition/Professional pre-installed models

**Note:** CD-ROM drive required for installation. Only built-in USB ports are supported

Microsoft®, Windows® and Windows Vista™ are either registered trademarks or trademarks of Microsoft Corporation in the United States and/or other countries. Macintosh®, Mac® OS and QuickTime® are either registered trademarks or trademarks of Apple Inc. in the United States and/or other countries. The SDHC logo is a trademark. ImageLink and ImageLink print system logo are trademarks of Eastman Kodak Company. PictBridge is a trademark. D-Lighting technology is provided by Apical Limited. The FotoNation logo is a trademark. The FotoConnect logo is a trademark. Products and brand names are trademarks or registered trademarks of their respective companies.

Specifications and equipment are subject to change without any notice or obligation on the part of the manufacturer. August 2007 ©2007 NIKON INC.



**Nikon Inc.,**  
1300 Walt Whitman Road, Melville, N.Y. 11747-3064 nikonusa.com / 1800-Nikon-UX